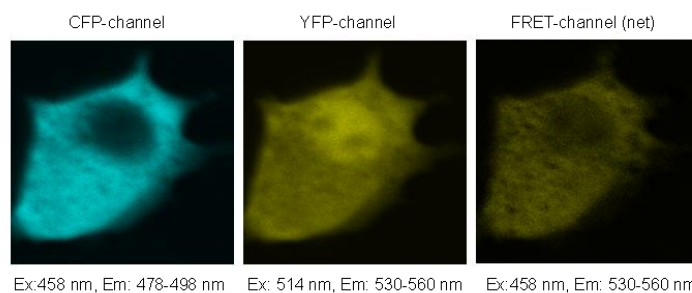


**Page 45. Figure 2.** The fluorescence microscopy imaging system for FRET studies. It consists of a Leica TCS SP2 confocal laser scanning microscope, a time-correlated single photon counting unit (TCSPC), an argon ion laser, a femto-seconds pulsed laser (76 MHz, 120 fs) and two displayers for image intensity and lifetime measurement respectively.



**Page 45. Figure 3.** Fluorescence images of the cell transfected with both CFP-hsp27 and YFP-p38 detected in CFP-, YFP- and FRET-channels respectively.